

QUANTIFIABLE EDGES SUBSCRIBER LETTER

ASSESSING MARKET ACTION WITH INDICATORS AND HISTORY

August 21, 2008

Issue 129

Market Overview

Summary of Recent Active Studies (see <http://QuantifiableEdges.blogspot.com> or Letters from listed dates for details)

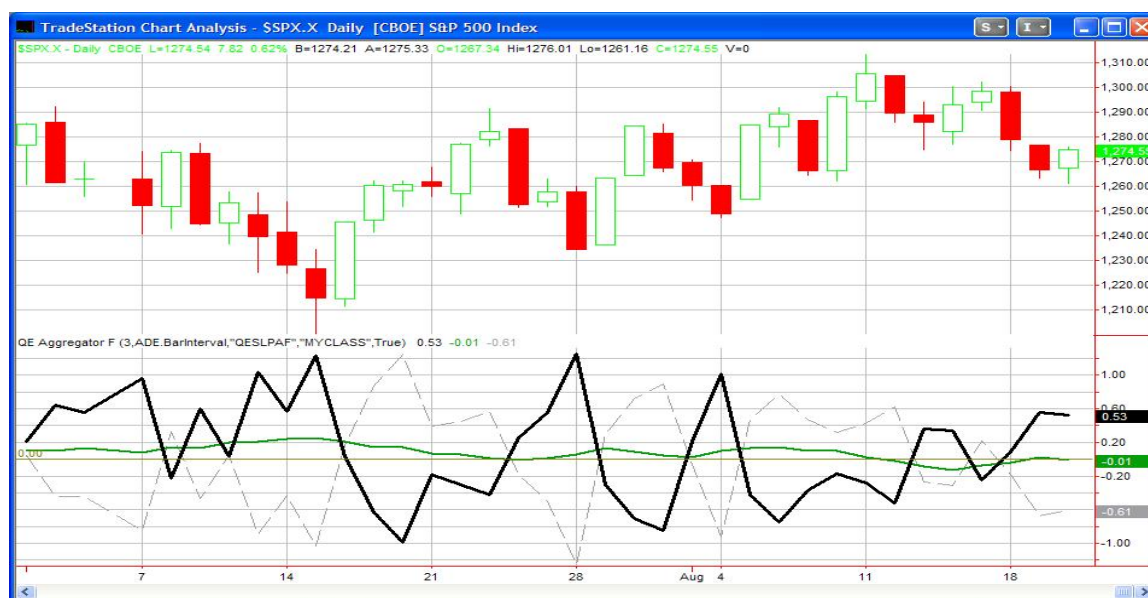
Study Date	Description	Time span	Bias	Avg Max Move	Avg MM + 1 Std Dev
August 20, 2008	2 Bad Breadth Days No Low	1-8 days	Bullish	3.45%	6.53%
August 19, 2008	1% Drop Extreme Low Vol	1-10 days	Bearish	-4.04%	-7.14%
August 15, 2008	SPX up 0.5 Vol Lowest in 20	1-20 days	Bearish		
7/30 & 8/10	Big up after big down	1-12 days	Bullish		
August 8, 2008	Nasdaq Dn Sox Up	1-30 Days	Bullish		
August 7, 2008	20 day high on low volume	1-10 days	Bearish		
July 7, 2008	5 Weeks Lower	1-10 weeks	Bearish		
March 17, 2008	Consumer Sentiment Stretch	1-12 months	Bullish		

If the avg max move is achieved it will appear in **bold and green**. If the avg + 1 std deviation is achieved, the study will be removed from active status.

Short-term Outlook (1-5 days) –neutral – updated 8/21

After chopping around for most of the day, the market rallied in the afternoon and finished solidly positive on the day. Volume remained typically light for the end of August, although higher than the last two days. Up issues edged out down issues on the NYSE.

Tonight's Aggregator chart is below:



The green Aggregator line slipped back just below 0 today while the black differential moved slightly closer to 0. Based on the current studies, the Aggregator is schedule to continue wiggling around 0 for the next few days. In other words, the bullish and bearish studies we are seeing are canceling each other out at this point. A strong edge is not evident in either direction. The black differential line compare the S&P performance with the expected performance over the last 3 days. This means that Monday's big down day will drop out of the calculation tomorrow. Therefore, unless there is a big selloff Thursday the differential line will drop towards 0 as well. The preference is to have them both stretched to the same side of the zero line as they were on Friday afternoon, which led me to take the S&P short Monday morning. From an index perspective I'm in "wait and see" mode.

Intermediate-term Outlook (1 week – 2 months)–neutral to slightly bullish–updated 8/18

Many of the bullish studies that occurred around the July bottom have started to dissipate. While several of the extreme breadth readings suggested it could be a bottom of significant duration, we still need to see positive indications of a continued rally. The strength in technology has provided some hope in the form of the SOX studies. Also notable is that the Nasdaq Composite has now closed higher 5 weeks in a row. In July we saw how negative persistence can be difficult to overcome. Now we have an example of positive persistence:

Nasdaq Closes Up 5 Weeks In A Row. Buy on close. \$100k/trade. Sell X weeks later. 1972-present										
X Weeks	Net Profit	Trades	Wins	Losses	% Wins	Avg Win	Avg Loss	W/L Ratio	Profit Factor	Avg Trade
20	\$242,970.36	44	32	12	72.73	\$12,001.44	(\$11,756.31)	1.02	2.72	\$5,522.05
19	\$244,971.37	44	34	10	77.27	\$11,385.83	(\$14,214.69)	0.80	2.72	\$5,567.53
18	\$195,012.47	46	29	17	63.04	\$12,931.12	(\$10,587.65)	1.22	2.08	\$4,239.40
17	\$154,139.05	48	28	20	58.33	\$12,717.54	(\$10,097.60)	1.26	1.76	\$3,211.23
16	\$144,463.02	49	29	20	59.18	\$11,710.46	(\$9,757.01)	1.20	1.74	\$2,948.22
15	\$140,873.70	50	29	21	58.00	\$11,605.36	(\$9,318.17)	1.25	1.72	\$2,817.47
14	\$97,350.40	52	30	22	57.69	\$9,748.18	(\$8,867.96)	1.10	1.50	\$1,872.12
13	\$93,994.11	53	30	23	56.60	\$9,593.75	(\$8,426.88)	1.14	1.48	\$1,773.47
12	\$42,229.93	53	30	23	56.60	\$8,758.58	(\$9,588.15)	0.91	1.19	\$796.79
11	\$98,688.14	55	36	19	65.45	\$8,071.42	(\$10,099.11)	0.80	1.51	\$1,794.33
10	\$153,348.97	57	38	19	66.67	\$8,383.04	(\$8,695.08)	0.96	1.93	\$2,690.33
9	\$181,315.84	59	40	19	67.80	\$7,997.86	(\$7,294.66)	1.10	2.31	\$3,073.15
8	\$151,852.99	60	37	23	61.67	\$7,955.59	(\$6,195.82)	1.28	2.07	\$2,530.88
7	\$117,423.00	61	40	21	65.57	\$6,725.99	(\$7,219.84)	0.93	1.77	\$1,924.97
6	\$62,771.78	62	38	24	61.29	\$5,823.68	(\$6,605.34)	0.88	1.40	\$1,012.45
5	\$82,607.84	62	39	23	62.90	\$5,022.36	(\$4,924.53)	1.02	1.73	\$1,332.38
4	\$83,383.05	62	42	20	67.74	\$4,004.05	(\$4,239.35)	0.94	1.98	\$1,344.89
3	\$92,335.71	62	45	17	72.58	\$3,288.48	(\$3,273.28)	1.00	2.66	\$1,489.29
2	\$42,669.11	62	36	26	58.06	\$2,809.97	(\$2,249.61)	1.25	1.73	\$688.21
1	\$21,931.76	62	39	23	62.90	\$1,439.50	(\$1,487.33)	0.97	1.64	\$353.74

The kind of positive persistence we're seeing often manages to continue higher over the following weeks and months.

The volume pattern over the first few weeks off the bottom provided some positive studies. Over the last two weeks we have seen that change as volume has produced negative expectations. The basic belief of most technicians is that you want to see volume rise on up days and decline on down days. I decided to test these basic rules this

weekend. First I looked at 4 basic scenarios: 1) Accumulation (volume up/ / price up), 2) Distribution (volume up / price down), 3) Attrition (volume down / price up) and 4) Low volume pullbacks (volume down / price down). Rather than just looking at performance following any given scenario, I looked for a series of them to occur. The criteria was fairly loose. I wanted to see any of the above conditions occur for the 2nd time within a 5-day period. Basic results below:

SPX rises on higher volume than the day before for the 2nd time in 5 days.										
Buy on close. Sell X days later. \$100,000/trade. Last 20 years.										
X Days	Net Profit	Trades	Wins	Losses	Win %	Avg Win	Avg Loss	W/L Ratio	Profit Factor	Avg Trade
30	\$124,075.71	96	65	31	67.71	\$3,479.31	(\$3,292.89)	1.06	2.22	1,292.46
20	\$66,194.24	118	72	46	61.02	\$2,727.00	(\$2,829.34)	0.96	1.51	560.97
15	\$69,028.09	139	83	56	59.71	\$2,264.45	(\$2,123.60)	1.07	1.58	496.60
14	\$57,740.71	142	85	57	59.86	\$2,216.08	(\$2,291.69)	0.97	1.44	406.62
13	\$54,189.98	150	87	63	58.00	\$2,114.99	(\$2,060.55)	1.03	1.42	361.27
12	\$38,276.24	154	91	63	59.09	\$1,834.08	(\$2,041.67)	0.90	1.30	248.55
11	\$20,199.12	159	87	72	54.72	\$1,862.12	(\$1,969.52)	0.95	1.14	127.04
10	\$21,660.29	160	93	67	58.13	\$1,699.38	(\$2,035.55)	0.83	1.16	135.38
9	\$26,403.59	166	99	67	59.64	\$1,634.37	(\$2,020.88)	0.81	1.20	159.06
8	\$31,590.12	177	105	72	59.32	\$1,568.91	(\$1,849.24)	0.85	1.24	178.48
7	\$21,080.47	184	104	80	56.52	\$1,511.35	(\$1,701.25)	0.89	1.15	114.57
6	\$17,701.67	190	104	86	54.74	\$1,429.76	(\$1,523.18)	0.94	1.14	93.17
5	\$6,987.52	195	111	84	56.92	\$1,157.39	(\$1,446.23)	0.80	1.06	35.83
4	(\$9,933.07)	212	105	107	49.53	\$1,176.94	(\$1,247.78)	0.94	0.93	(46.85)
3	(\$19,275.71)	231	120	111	51.95	\$935.47	(\$1,184.98)	0.79	0.85	(83.44)
2	(\$8,653.90)	267	130	137	48.69	\$792.52	(\$815.19)	0.97	0.92	(32.41)
1	(\$4,584.60)	321	165	155	51.40	\$536.37	(\$600.56)	0.89	0.95	(14.28)

SPX falls on higher volume than the day before for the 2nd time in 5 days.										
Buy on close. Sell X days later. \$100,000/trade. Last 20 years.										
X Days	Net Profit	Trades	Wins	Losses	Win %	Avg Win	Avg Loss	W/L Ratio	Profit Factor	Avg Trade
30	\$57,085.68	80	47	33	58.75	\$4,217.66	(\$4,277.10)	0.99	1.40	713.57
20	\$50,621.84	96	56	40	58.33	\$3,117.49	(\$3,098.94)	1.01	1.41	527.31
15	\$49,463.55	109	66	43	60.55	\$2,743.93	(\$3,061.30)	0.90	1.38	453.79
10	\$13,337.77	119	69	50	57.98	\$2,017.35	(\$2,517.19)	0.80	1.11	112.08
9	\$14,004.81	124	71	53	57.26	\$2,055.94	(\$2,489.94)	0.83	1.11	112.94
8	\$5,688.67	126	65	61	51.59	\$2,206.30	(\$2,257.71)	0.98	1.04	45.15
7	\$24,059.32	128	71	57	55.47	\$1,960.80	(\$2,020.30)	0.97	1.21	187.96
6	\$26,258.76	131	76	55	58.02	\$1,712.91	(\$1,889.49)	0.91	1.25	200.45
5	\$16,437.44	135	67	68	49.63	\$1,661.67	(\$1,395.50)	1.19	1.17	121.76
4	\$15,376.65	147	85	62	57.82	\$1,519.63	(\$1,835.35)	0.83	1.14	104.60
3	(\$10,816.28)	167	88	79	52.69	\$1,325.21	(\$1,613.10)	0.82	0.92	(64.77)
2	\$11,747.56	197	105	92	53.30	\$1,344.92	(\$1,407.27)	0.96	1.09	59.63
1	\$20,354.00	236	137	99	58.05	\$924.39	(\$1,073.61)	0.86	1.19	86.25

SPX rises on lower volume than the day before for the 2nd time in 5 days.										
Buy on close. Sell X days later. \$100,000/trade. Last 20 years.										
X Days	Net Profit	Trades	Wins	Losses	Win %	Avg Win	Avg Loss	W/L Ratio	Profit Factor	Avg Trade
30	\$82,807.97	85	54	31	63.53	\$3,584.09	(\$3,572.03)	1.00	1.75	974.21
20	\$119,735.97	114	79	35	69.30	\$3,063.83	(\$3,494.48)	0.88	1.98	1,050.32
15	\$87,067.52	126	79	47	62.70	\$2,476.33	(\$2,309.84)	1.07	1.80	691.01
10	\$39,821.52	137	79	58	57.66	\$1,871.97	(\$1,863.18)	1.00	1.37	290.67
9	\$43,506.84	143	80	63	55.94	\$1,940.86	(\$1,773.99)	1.09	1.39	304.24
8	\$37,814.25	145	83	62	57.24	\$1,798.70	(\$1,798.03)	1.00	1.34	260.79
7	\$35,414.89	149	79	70	53.02	\$1,828.06	(\$1,557.17)	1.17	1.32	237.68
6	\$9,947.23	151	77	74	50.99	\$1,721.84	(\$1,657.22)	1.04	1.08	65.88
5	\$6,777.47	153	80	73	52.29	\$1,425.33	(\$1,469.17)	0.97	1.06	44.30
4	\$4,385.96	164	85	79	51.83	\$1,361.64	(\$1,409.54)	0.97	1.04	26.74
3	\$15,573.54	181	99	82	54.70	\$1,182.56	(\$1,237.80)	0.96	1.15	86.04
2	\$14,607.03	203	108	95	53.20	\$934.26	(\$908.35)	1.03	1.17	71.96
1	\$13,505.09	249	139	110	55.82	\$565.44	(\$591.74)	0.96	1.21	54.24

SPX falls on lower volume than the day before for the 2nd time in 5 days.										
Buy on close. Sell X days later. \$100,000/trade. Last 20 years.										
X Days	Net Profit	Trades	Wins	Losses	Win %	Avg Win	Avg Loss	W/L Ratio	Profit Factor	Avg Trade
30	\$115,929.76	80	55	25	68.75	\$3,931.74	(\$4,012.64)	0.98	2.16	1,449.12
20	\$51,708.44	93	53	40	56.99	\$3,204.38	(\$2,953.09)	1.09	1.44	556.00
15	\$95,678.31	103	60	43	58.25	\$2,999.94	(\$1,960.89)	1.53	2.13	928.92
10	\$67,958.00	113	74	39	65.49	\$2,336.80	(\$2,691.41)	0.87	1.65	601.40
9	\$57,727.67	116	67	49	57.76	\$2,382.01	(\$2,078.92)	1.15	1.57	497.65
8	\$58,162.95	118	67	51	56.78	\$2,430.11	(\$2,052.04)	1.18	1.56	492.91
7	\$59,802.89	119	64	55	53.78	\$2,372.91	(\$1,673.88)	1.42	1.65	502.55
6	\$42,842.38	121	66	55	54.55	\$2,048.13	(\$1,678.81)	1.22	1.46	354.07
5	\$45,134.42	126	69	57	54.76	\$1,921.09	(\$1,533.69)	1.25	1.52	358.21
4	\$51,790.79	136	75	61	55.15	\$1,857.18	(\$1,434.39)	1.29	1.59	380.81
3	\$57,394.77	148	87	61	58.78	\$1,577.87	(\$1,309.51)	1.20	1.72	387.80
2	\$30,137.16	168	95	73	56.55	\$1,281.06	(\$1,254.30)	1.02	1.33	179.39
1	\$23,343.21	199	111	87	55.78	\$905.93	(\$887.52)	1.02	1.30	117.30

Low volume pullbacks certainly seem to be the most positive scenario of the four. High volume rallies (accumulation) have a tendency to pull back in the short-term. Looking further out, they do develop into the 2nd-best scenario.

I also decided to look at the same scenarios when the S&P was mired in a long-term downtrend. I thought the results there were quite interesting:

SPX rises on higher volume than the day before for the 2nd time in 5 days. SPX closes < 200-day MA.										
Buy on close. Sell X days later. \$100,000/trade. Last 20 years.										
X Days	Net Profit	Trades	Wins	Losses	Win %	Avg Win	Avg Loss	W/L Ratio	Profit Factor	Avg Trade
30	(\$5,995.26)	18	10	8	55.56	\$3,863.49	(\$5,578.77)	0.69	0.87	(333.07)
20	(\$9,833.86)	23	10	13	43.48	\$2,923.78	(\$3,005.51)	0.97	0.75	(427.56)
15	(\$8,842.66)	27	15	12	55.56	\$2,199.69	(\$3,486.50)	0.63	0.79	(327.51)
10	(\$17,793.60)	28	15	13	53.57	\$1,702.59	(\$3,333.27)	0.51	0.59	(635.49)
9	(\$16,836.91)	28	16	12	57.14	\$1,473.09	(\$3,367.19)	0.44	0.58	(601.32)
8	(\$9,014.69)	29	15	14	51.72	\$1,784.49	(\$2,555.86)	0.70	0.75	(310.85)
7	(\$6,014.23)	32	17	15	53.13	\$1,605.51	(\$2,220.52)	0.72	0.82	(187.94)
6	\$1,078.19	32	17	15	53.13	\$1,930.13	(\$2,115.60)	0.91	1.03	33.69
5	(\$8,032.46)	34	19	15	55.88	\$1,309.50	(\$2,194.20)	0.60	0.76	(236.25)
4	(\$14,951.20)	36	16	20	44.44	\$1,476.14	(\$1,928.47)	0.77	0.61	(415.31)
3	(\$16,119.78)	39	17	22	43.59	\$1,339.25	(\$1,767.59)	0.76	0.59	(413.33)
2	(\$8,154.43)	48	19	29	39.58	\$1,074.58	(\$985.22)	1.09	0.71	(169.88)
1	(\$8,056.40)	55	24	31	43.64	\$719.48	(\$816.90)	0.88	0.68	(146.48)

While accumulation in general appeared positive, when the market is in a downtrend this is not necessarily the case. Perhaps the higher volume is more often due to short-covering and less often due to actual institutional accumulation. Whatever the reason, it appears a pattern of higher volume up days during a downtrend implies negative expectations.

SPX falls on higher volume than the day before for the 2nd time in 5 days. SPX closes < 200-day MA.										
Buy on close. Sell X days later. \$100,000/trade. Last 20 years.										
X Days	Net Profit	Trades	Wins	Losses	Win %	Avg Win	Avg Loss	W/L Ratio	Profit Factor	Avg Trade
30	\$31,387.16	33	20	13	60.61	\$5,557.20	(\$6,135.14)	0.91	1.39	951.13
20	\$25,959.07	38	25	13	65.79	\$3,443.50	(\$4,625.27)	0.74	1.43	683.13
15	(\$11,706.01)	44	25	19	56.82	\$3,284.22	(\$4,937.45)	0.67	0.88	(266.05)
10	(\$11,628.12)	49	30	19	61.22	\$2,209.59	(\$4,100.83)	0.54	0.85	(237.31)
9	(\$5,314.18)	52	30	22	57.69	\$2,387.28	(\$3,496.93)	0.68	0.93	(102.20)
8	(\$16,837.83)	53	24	29	45.28	\$2,829.91	(\$2,922.61)	0.97	0.80	(317.69)
7	(\$6,789.10)	54	25	29	46.30	\$2,544.30	(\$2,427.47)	1.05	0.90	(125.72)
6	(\$8,438.44)	54	26	28	48.15	\$2,068.25	(\$2,221.89)	0.93	0.86	(156.27)
5	(\$10,928.66)	56	22	34	39.29	\$2,035.10	(\$1,638.26)	1.24	0.80	(195.15)
4	(\$14,838.82)	66	35	31	53.03	\$1,725.90	(\$2,427.27)	0.71	0.80	(224.83)
3	(\$21,325.36)	72	33	39	45.83	\$1,600.40	(\$1,900.99)	0.84	0.71	(296.19)
2	(\$13,906.86)	86	37	49	43.02	\$1,869.08	(\$1,695.16)	1.10	0.83	(161.71)
1	\$1,690.16	107	57	50	53.27	\$1,133.54	(\$1,258.43)	0.90	1.03	15.80

Net expectations here for most time periods switch from positive to negative when trading below the 200-ma. Somewhat surprising is the fact that high volume selloffs appear less bearish than high volume rallies during a downtrend. Next I looked at the lower-volume scenarios:

SPX rises on lower volume than the day before for the 2nd time in 5 days. SPX closes < 200-day MA.										
Buy on close. Sell X days later. \$100,000/trade. Last 20 years.										
X Days	Net Profit	Trades	Wins	Losses	Win %	Avg Win	Avg Loss	W/L Ratio	Profit Factor	Avg Trade
30	\$77,386.74	83	52	31	62.65	\$3,617.69	(\$3,572.03)	1.01	1.70	932.37
20	\$116,950.47	112	77	35	68.75	\$3,107.24	(\$3,494.48)	0.89	1.96	1,044.20
15	\$86,975.97	124	78	46	62.90	\$2,504.26	(\$2,355.58)	1.06	1.80	701.42
10	\$36,918.53	135	77	58	57.04	\$1,882.90	(\$1,863.18)	1.01	1.34	273.47
9	\$38,229.13	141	78	63	55.32	\$1,922.96	(\$1,773.99)	1.08	1.34	271.13
8	\$34,334.88	143	81	62	56.64	\$1,800.15	(\$1,798.03)	1.00	1.31	240.10
7	\$33,148.91	147	77	70	52.38	\$1,846.11	(\$1,557.17)	1.19	1.30	225.50
6	\$6,523.71	149	75	74	50.34	\$1,722.11	(\$1,657.22)	1.04	1.05	43.78
5	\$5,308.58	151	78	73	51.66	\$1,443.05	(\$1,469.17)	0.98	1.05	35.16
4	\$3,007.64	162	83	79	51.23	\$1,377.84	(\$1,409.54)	0.98	1.03	18.57
3	\$14,178.85	178	97	81	54.49	\$1,192.30	(\$1,252.77)	0.95	1.14	79.66
2	\$13,654.05	199	106	93	53.27	\$935.89	(\$919.89)	1.02	1.16	68.61
1	\$12,328.39	244	136	108	55.74	\$563.08	(\$594.91)	0.95	1.19	50.53

Here the results are generally around or just beneath random for most of the lower time frames. Better than either of the high-volume scenarios, though. Lastly, low volume pullbacks in long-term downtrends:

SPX falls on lower volume than the day before for the 2nd time in 5 days. SPX closes < 200-day MA.										
Buy on close. Sell X days later. \$100,000/trade. Last 20 years.										
X Days	Net Profit	Trades	Wins	Losses	Win %	Avg Win	Avg Loss	W/L Ratio	Profit Factor	Avg Trade
30	\$73,626.10	31	22	9	70.97	\$5,159.28	(\$4,430.89)	1.16	2.85	2,375.04
20	\$38,717.49	34	20	14	58.82	\$4,107.12	(\$3,101.77)	1.32	1.89	1,138.75
15	\$39,519.83	37	24	13	64.86	\$3,450.59	(\$3,330.33)	1.04	1.91	1,068.10
10	\$27,141.50	41	25	16	60.98	\$3,057.75	(\$3,081.39)	0.99	1.55	661.99
9	\$34,256.80	44	28	16	63.64	\$2,871.36	(\$2,883.84)	1.00	1.74	778.56
8	\$40,602.86	44	28	16	63.64	\$3,079.17	(\$2,850.86)	1.08	1.89	922.79
7	\$37,824.47	45	29	16	64.44	\$2,749.54	(\$2,619.51)	1.05	1.90	840.54
6	\$29,127.20	46	29	17	63.04	\$2,491.85	(\$2,537.44)	0.98	1.68	633.20
5	\$29,437.33	48	29	19	60.42	\$2,310.60	(\$1,977.37)	1.17	1.78	613.28
4	\$35,177.88	51	29	22	56.86	\$2,501.47	(\$1,698.40)	1.47	1.94	689.76
3	\$34,088.30	59	38	21	64.41	\$1,946.01	(\$1,898.09)	1.03	1.86	577.77
2	\$22,276.35	70	42	28	60.00	\$1,511.07	(\$1,471.02)	1.03	1.54	318.23
1	\$12,096.37	79	44	35	55.70	\$1,162.84	(\$1,116.24)	1.04	1.31	153.12

Low volume-pullbacks appear to provide the best setups when the market is trading below its 200-day moving average.

The two biggest themes I'm watching at the moment are the strength in technology and the questionable volume patterns. Until the pattern of higher lows and higher highs is broken I will lean towards the bullish side. This could change should some more bearish evidence appear, but I'm not seeing much that's screaming sell from an intermediate-term standpoint just yet.

Catapult and Capitulative Breadth Statistics

(Catapult Presentation Part 1) (Catapult Presentation Part 2)

Open Catapult Trades

none

Open Big 50 Trades

None

Catapult for ETF's Trades

EZU – bought ½ position @ \$45.63

EZU – bought 2nd half @ \$44.72

New

EPP – buy @ \$39.46 limit

Broad Market Large Cap CBI – 0

Sector CBI Breakdown (% of stocks with active catapult triggers within each sector.)

Index	ETF	CBI %	Index	ETF	CBI %
DJ US Broker Dealers	IAI	0.00	DJ US Energy	IYE	1.16
DJ US Insurance Index	IAK	0.00	DJ US Financial	IYF	0.00
DJ US Regional Banks	IAT	0.00	DJ US Financial Services	IYG	0.00
DJ US Utilities	IDU	0.00	DJ US Healthcare	IYH	0.00
DJ US Oil&Gas Expl & Prod	IEO	0.00	DJ US Industrial Sector	IYJ	0.00
DJ US Oil Equip & Svcs	IEZ	1.92	DJ US Consumer Goods	IYK	0.00
DJ US Pharmaceuticals	IHE	2.70	DJ US Basic Materials	IYM	0.00
DJ US Healthcare Providers	IHF	0.00	DJ US Real Estate	IYR	0.00
DJ US Medical Devices	IHI	2.44	DJ US Transportation	IYT	0.00
DJ US Aerospace & Defense	ITA	0.00	DJ US Technology Sector	IYW	1.01
DJ US Home Construction	ITB	0.00	DJ US Telecommunications	IYZ	0.00
DJ US Consumer Svcs	IYC	0.88	Nasdaq 100	QQQQ	0.00

No capitulation currently evident.

Additional New Trade Ideas

XSD – buy @ \$42.51 stop. Sell stoop @ \$41.50 if filled. I've been keeping a close eye on the semis. If the market is going to rally from here – which isn't altogether clear at this point – then my research shows that the semis should lead the way – and they could rise in a big way. Recall the below study from the August 8th Subscriber Letter:

<i>Nasdaq Composite loses at least 0.75% while the SOX gains at least 1.5%. Buy SOX on close. Sell X days later. \$100k/trade. 1995-present.</i>													
X Days	Net Profit	Trades	Wins	Losses	% Wins	Max Win	Max Loss	Avg Win	Avg Loss	W/L Ratio	Profit Factor	Avg Trade	
30	\$150,702.84	9	7	2	77.78	\$49,321.44	(\$8,920.44)	\$22,936.22	(\$4,925.34)	4.66	16.30	\$16,744.76	
29	\$170,676.93	9	8	1	88.89	\$47,985.84	(\$2,876.92)	\$21,694.23	(\$2,876.92)	7.54	60.33	\$18,964.10	
25	\$144,918.04	10	8	2	80.00	\$39,150.72	(\$16,217.64)	\$21,846.85	(\$14,928.37)	1.46	5.85	\$14,491.80	
20	\$121,624.02	11	9	2	81.82	\$29,307.60	(\$17,926.08)	\$16,231.18	(\$12,228.29)	1.33	5.97	\$11,056.73	
15	\$102,750.77	11	10	1	90.91	\$25,220.16	(\$5,826.26)	\$10,857.70	(\$5,826.26)	1.86	18.64	\$9,340.98	
10	\$37,333.66	13	9	4	69.23	\$26,467.00	(\$16,987.10)	\$8,893.31	(\$10,676.54)	0.83	1.87	\$2,871.82	
9	\$40,650.17	13	7	6	53.85	\$25,211.00	(\$12,247.18)	\$10,400.80	(\$5,359.24)	1.94	2.26	\$3,126.94	
8	\$63,844.37	13	9	4	69.23	\$21,320.00	(\$9,837.84)	\$9,104.85	(\$4,524.83)	2.01	4.53	\$4,911.11	
7	\$40,805.07	13	8	5	61.54	\$14,963.76	(\$5,438.60)	\$7,462.51	(\$3,779.00)	1.97	3.16	\$3,138.85	
6	\$61,468.61	13	10	3	76.92	\$17,668.00	(\$3,168.63)	\$6,595.34	(\$1,494.94)	4.41	14.71	\$4,728.35	
5	\$78,528.73	13	11	2	84.62	\$23,734.53	(\$1,133.07)	\$7,270.89	(\$725.54)	10.02	55.12	\$6,040.67	
4	\$76,939.13	13	11	2	84.62	\$15,654.69	(\$3,562.00)	\$7,603.87	(\$3,351.73)	2.27	12.48	\$5,918.39	
3	\$51,000.15	13	11	2	84.62	\$10,700.62	(\$3,364.72)	\$5,075.05	(\$2,412.68)	2.10	11.57	\$3,923.09	
2	\$63,698.20	13	11	2	84.62	\$15,086.12	(\$4,233.60)	\$6,329.06	(\$2,960.72)	2.14	11.76	\$4,899.86	
1	\$42,475.50	13	10	3	76.92	\$11,989.42	(\$3,381.84)	\$4,783.45	(\$1,786.33)	2.68	8.93	\$3,267.35	

We're nearing 2 weeks since the study. Between 2 and 3 weeks is the time where it really kicks into gear from both a winning percentage and an avg trade perspective. Of the 4 semi ETF's, XSD has held up the best over the last few days. It remains well above its recent breakout point and its 50-day moving average. Today's narrow range bar could provide a nice entry trigger. I'll look to buy on a move through Wednesday's high with a stop just below the 50ma. Traders could also look for an entry if it approaches and reverses near the 50ma on an intraday basis. I'd likely look to hold at least part of this position for more than just a quick swing trade should it go my way.

Active Trades Table

Symbol	Entry Date	Entry Price	Current Price	% Gain/Loss	Stop	Notes
EZU	8/15/2008	\$45.63	\$45.20	-0.94%		2 lots
SPY(S)	8/18/2008	\$130.43	\$127.41	2.32%		covered remaining

Stocks and ETF's on my Radar

INTC – Has pulled back with the semis and could be another way to play them.

This report has been prepared by Hanna Capital Management, LLC and is provided for information purposes only. Under no circumstances is it to be used or considered as an offer to sell, or a solicitation of any offer to buy securities. While information contained herein is believed to be accurate at the time of publication, we make no representation as to the accuracy or completeness of any data, studies, or opinions expressed and it should not be relied upon as such. Robert Hanna, Hanna Capital Management, LLC or clients of Hanna Capital Management, LLC may have positions or other interests in securities (including derivatives) directly or indirectly which are the subject of this report. This report is provided solely for the information of Hanna Capital Management, LLC clients and prospects who are expected to make their own investment decisions without reliance upon this report. Neither Hanna Capital Management, LLC nor any officer or employee of Hanna Capital Management, LLC accepts any liability whatsoever for any direct or consequential loss arising from any use of this report or its contents. This report may not be reproduced, distributed or published by any recipient for any purpose without the prior express consent of Hanna Capital Management, LLC.

Copyright © 2008 Hanna Capital Management, LLC